



## English 5306: Early Modern English Poetry

**Dr. Sarah Roche**

[smoreman@sulross.edu](mailto:smoreman@sulross.edu)

Phone: (830) 703-4837

**Office:** Eagle Pass B121, Del Rio 213

**Office Hours:** M 10-12, T 3-6, Th 4-7  
and by appt

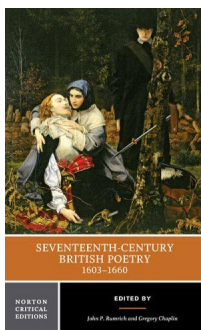
### Course Description

In English 5306, we will read early modern British poetry (roughly 1500-1700) and explore the various ways in which writers engaged with epistemological questions about the nature and limits of human knowledge. These explorations of epistemology reflect the fascinating intellectual and scientific changes and developments which called into question traditional ways of understanding human life. We will focus on poetry, a dominant literary genre of the time, to sharpen our understanding of how poetry articulates human experience and philosophy.

### Required Text

John P. Rumrich and Gregory Chaplin. *Seventeenth-Century British Poetry, 1603-1660*. 2005

ISBN: 978-0-393-97998-5



### Optional Text

A Poetry handbook such as *Perrine's Sound and Sense: An Introduction to Poetry* by Laurence Perrine, Thomas R. Arp, Greg Johnson.

### Resources (see links in Start Here Module)

- Poetry Foundation link to <https://www.poetryfoundation.org/>
- Literary Devices, link to Poetry Foundation to <https://www.poetryfoundation.org/education/glossary>
- Videos and web pages in appropriate modules
- Writing Center link
- English Research Guide at <https://sulross.libguides.com/english>
- Library at <https://library.sulross.edu/>
- How to Read a Poem (this handout from the University of Wisconsin–Madison guides you to write close readings: <https://writing.wisc.edu/handbook/readingpoetry/>)

### English Graduate Program Student Learning Outcomes

Graduate students will be able to

1. SLO 1 – Students will demonstrate a critical understanding of the significance of major authors, literary works in different genres, and definitive literary movements in literature, theory, and writing, as focused by their programs.
2. SLO 2 – Students will demonstrate the ability to critically analyze and interpret literature, theory, and writing, as focused by their programs.
3. SLO 3 – Students will demonstrate the ability to conduct and utilize research methodologies in the study of literature,

theory, and writing, as focused by their programs.

### Course Outcomes

When students complete ENGL 5306, they should be able to

- I. Critically analyze early modern English poetry
- II. Explain significance of historical, social, and textual contexts of Early Modern English poetry
- III. Engage in professional literary activities and organizations (student membership, processes and awareness and attitude)
- IV. Support original inquiry about early modern English poetry using research and peer writing group feedback
- V. Present ideas at a symposium or conference

### How you achieve outcomes and earn your grade

#### ASSESSMENTS

1. Close Readings (one per module) to practice literary analysis
2. Critical analysis article suitable for publication in a journal or the SRSU *Sage*
3. Presentation of condensed version of your article for SRSU Symposium or conference presentation

#### ACTIVITIES

- Discussions to develop and deepen semester inquiry about British poetry
- Writing groups to support and provide feedback during writing process
- Meetings (Blackboard Collaborate or Teams) with Dr. Roche scheduled throughout semester

#### Grade Determination

Discussions	20%
Meetings with Dr. Roche	10%
Close Readings	30% (5, 5, 10, 10)
Critical Analysis	25%
Presentation	15%

### Course Policies

**Late Work:** Late work usually impacts grades. Stay in touch with me.

**Attendance:** Students are to make themselves aware of the SRSU policies on Absences and Class Attendance posted in the SRSU Student Handbook. Make-up work is at the discretion of the instructor as it relates to “explained and excused” absences. The Absences/Class Attendance policy includes all absences excused or unexcused. In this course you are expected to attend all classes (as scheduled electronically on Blackboard), to be punctual, and to complete all assignments on time.

**Academic Integrity:** Students must adhere to Sul Ross’s Academic Honesty policy. Students in this class are expected to demonstrate scholarly behavior and academic honesty in the use of intellectual property. A scholar is expected to be punctual, prepared, and focused. Examples of academic dishonesty include but not limited to: Turning in work as original that was used in whole or part of another course and/or professor; turning in another person’s work as one’s own; copying from professional works or internet sites or generative A.I. without citation.

#### Prohibited Uses of A.I.:

1. Using AI tools to generate answers for quizzes, exams, or other assessments is strictly prohibited. This includes using AI to write essays, solve problems, or complete assignments without proper attribution.
2. Presenting AI-generated content as one's own work without proper attribution is considered plagiarism. Students must clearly distinguish between their own work and any AI-generated assistance.
3. AI tools should not be used to engage in unethical or inappropriate behavior, such as generating harmful, offensive, or misleading content.

**Consequences of Violations:** Violations of this policy will be treated as breaches of academic integrity and may result in disciplinary action, including but not limited to:

- A failing grade on the assignment
- A failing grade for the course
- Referral to the institution's academic integrity board

### **Best Practices for Using AI Tools**

1. Always disclose the use of AI tools when submitting assignments or participating in discussions.
2. Evaluate AI-generated content critically and ensure that it aligns with course objectives and academic standards.
3. Use AI as a supplementary tool rather than a replacement for original analysis and creative thinking.

**Seeking Guidance:** If you are uncertain about the appropriate use of AI tools in a specific context, please consult with the instructor before proceeding. The instructor of the course is available to clarify the policy and provide guidance on acceptable practices.

### **University Programs and Services**

**Required Student Responsibilities Statement:** All full-time and part-time students are responsible for familiarizing themselves with the Student Handbook and the Undergraduate & Graduate Catalog and for abiding by the University rules and regulations. Additionally, students are responsible for checking their Sul Ross email as an official form of communication from the university. Every student is expected to obey all federal, state and local laws and is expected to familiarize themselves with the requirements of such laws.

**Required for Remote/Online Courses. SRSU Distance Education Statement:** Students enrolled in distance education courses have equal access to the university's academic support services, such as library resources, online databases, and instructional technology support. For more information about accessing these resources, visit the SRSU website. Students should correspond using Sul Ross email accounts and submit online assignments through Blackboard, which requires secure login. Students enrolled in distance education courses at Sul Ross are expected to adhere to all policies pertaining to academic honesty and appropriate student conduct, as described in the student handbook. Students in web-based courses must maintain appropriate equipment and software, according to the needs and requirements of the course, as outlined on the SRSU website. Directions for filing a student complaint are located in the student handbook.

**Required by American with Disabilities Act SRSU Disability Services:** SRSU Accessibility Services. Sul Ross State University (SRSU) is committed to equal access in compliance with the Americans with Disabilities Act of 1973. It is SRSU policy to provide reasonable accommodations to students with documented disabilities. It is the student's responsibility to initiate a request each semester for each class. Students seeking accessibility/accommodations services should contact Mrs. Mary Schwartze Grisham, LPC, SRSU's Accessibility Services Director or Ronnie Harris, LPC, Counselor, at 432-837-8203 or email [mschwartz@sulross.edu](mailto:mschwartz@sulross.edu) or [ronnie.harris@sulross.edu](mailto:ronnie.harris@sulross.edu).

**Technical Support:** The Support Desk is where you can direct your more technical questions. For example, the Support Desk can help you if you are having issues submitting a document, getting videos to play, or using Blackboard. The support desk is open 24 hours a day/7 day a week for your convenience. [Blackboardsupport@sulross.edu](mailto:Blackboardsupport@sulross.edu) or 888.837.6055.

**Email, Blackboard, and Office 365/One Drive:** You will want to check your Sul Ross e-mail regularly. It is an easy way for the instructor to stay in contact with you and for you to stay in contact with the instructor. The instructor will use Blackboard to send messages to the class, collect major assignments, provide students with access to class assignments, and post students' major grades. You need to be able to access both your SRSU e-mail, Blackboard, and Office 365/OneDrive accounts. If you need login help, please call 432-837-8888. Check your access early in the semester. The instructor recommends that you save your work on Office 365/OneDrive. This way you can access your work from any computer that has Internet access on or off campus.

**Writing Support:** As a Sul Ross student, you should seek writing feedback and/or assistance at The Writing Center which provides online tutoring support. You can access the Writing Center via Blackboard. Be sure to allow 48 hours turnaround time.

**SRSU Library Services:** The Sul Ross Library offers free resources and services to the entire SRSU community. Access and borrow books, articles, and more by visiting the library's website, [library.sulross.edu](http://library.sulross.edu). Off-campus access requires your LoboID and password. Check out materials using your photo ID. Librarians are a tremendous resource for your coursework and can be reached in person, by email ([srsulibrary@sulross.edu](mailto:srsulibrary@sulross.edu)), or phone (432-837-8123).