



## English 3309: English Literature from Beowulf to 1800: Poetry

**Dr. Sarah Moreman**  
[smoreman@sulross.edu](mailto:smoreman@sulross.edu)  
 Phone: (830) 703-4837

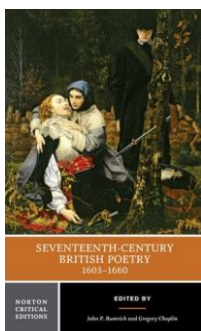
**Office:** Del Rio Faculty Building Room 213  
**Office Hrs:** T, W, Th 10:00 - 2:00  
 and by appointment

### Course Description

In English 3309 we will closely and carefully read early English poetry, including the Anglo Saxon poem, *Beowulf* and seventeenth-century poems. You will read the assigned literature, reflect on it, write weekly responses which will fuel class discussions. Please plan now to devote at least two hours per day for your reading and writing.

### Required Text

Gregory Chaplin, John P. Rumrich. *Seventeenth-Century British Poetry, 1603-1660*. 2005  
 ISBN: 978-0-393-97998-5 paperback



### English Program Student Learning Outcomes

The graduating student in English will demonstrate that he/she can

- construct essays that demonstrate clear topic/thesis, development, organization, and appropriate language,
- select, evaluate, and synthesize primary and secondary sources and correctly document those sources, and
- demonstrate knowledge of a variety of literature, of elements of literature, and of literary genres necessary for success in teaching or in graduate school.

### Course Outcomes

When students complete ENGL 3309, they should be able to

1. recognize and identify seventeenth-century English poets and their poetry,
2. describe the historical, social, and textual contexts of English literature,
3. explain how poets use the elements and devices of poetry to convey meaning, and
4. analyze poetry in clear written and spoken academic language.

### Grade Determination

| Assignment   | SLO        | Due Date              | Points Possible |
|--|------------|-----------------------|-----------------|
| Short literary analyses<br>(4 papers, 5 points each) | 3, 4       | 9/6, 9/20, 10/3, 10/4 | 20              |
| Poetry Readings                                      | 3, 4       | see sign-up           | 10              |
| Tests (3 tests, 10 points each)                      | 1, 2, 3    | Sep 13, Oct 11, Nov 8 | 30              |
| Term Paper: Literary Analysis                        | 3, 4       | Nov 1                 | 20              |
| Cumulative Final Exam                                | 1, 2, 3, 4 | Dec 13, 6-9 p.m.      | 20              |

**Summary of Assignments** (All assignments will be described in Handouts on Blackboard)**Literary Analyses**

One-page essays that explain how assigned poet conveys meaning using literary elements or devices. These short pieces would be like a part of a longer literary analysis. Writing five analyses and receiving feedback should help you become comfortable with academic analysis.

**Poetry Readings**

In addition to class discussions, each of you will read a short poem or up to fourteen lines of a longer poem out loud to demonstrate through your reading that you understand the poem and you can observe line lengths, punctuation, enjambment, rhythm and meter. You will read a poem from that day's assigned reading.

**Tests**

Short exercises: either multiple choice or short answer opportunities for you to demonstrate mastery of content.

**Term Paper**

You will research a question you develop about English poetry and its contexts. The paper will support your original thesis with sources and references to poetry. The paper will be about eight pages including the Works Cited page.

**Final Exam**

The final exam will be a cumulative test of short answer and essay questions to be completed in class during the final exam period.

**Course Policies****Scholastic Honesty**

All work submitted must be your own and must be written exclusively for this class; the use of sources must be appropriately, correctly, and consistently documented. Quotations, paraphrases, or summaries that are not documented and the use of papers written by others constitute plagiarism.

Three different acts are considered plagiarism:

- (1) failing to cite quotations and borrowed ideas,
- (2) failing to enclose borrowed language in quotation marks, and
- (3) failing to put summaries and paraphrases in your own words.

**A grade of "F" for the course is earned if the work exhibits any of these kinds of scholastic dishonesty.**

**Course Texts**

In order to succeed in this course, you must read the course texts; make sure you have the textbook in class.

**Late Papers/Assignments**

To pass the class you must successfully complete and turn in to me each assignment by the due date.

**ADA Statement**

Sul Ross State University is committed to equal access in compliance with the Americans with Disabilities Act of 1973. It is the student's responsibility to initiate a request for accessibility services. Students seeking accessibility services must contact Kathy Biddick in Student Services, Room C-102, Uvalde campus. The mailing address is 2623 Garner Field Road, Rio Grande College-Sul Ross State University, Uvalde, Texas 78801. Telephone: 830-279-3003. E-mail: kbiddick@sulross.edu.

**Schedule**

Note: The schedule is subject to modification.

Reading abbreviations: poems and essays from Rumrich and Chaplin's *Seventeenth-Century British Poetry, 1603-1660*, will be referred to as *Seventeenth-Century*

Readings from the online *Sound and Sense* will be referred to as *S&S*

**Week One, August 30:** define poetry and rhetoric of poetry; describe poetry reading aloud; introduce seventeenth-century English contexts in which literature was shaped and produced; introduce literary analysis, or, explain *how* poets convey meaning using the language of poetry; in-class try-it-out with a Donne poem; begin Literary Analysis #1.

**Week Two, September 6:** Literary Analysis #1 due

Be prepared to discuss the following readings:

*Seventeenth-Century:* Lawrence Babb "The Physiology and Psychology of the Renaissance"  
John Donne's poems from *Songs and Sonnets* (23-37)

S&S: Ch 1 defining poetry, Ch 2 on how to read poetry

**Week Three, September 13:** Test #1 on elements of Poetry

Be prepared to discuss the following readings:

*Seventeenth-Century:* T. S. Eliot "The Metaphysical Poets"  
John Donne's poems from *Divine Poems* (69-74)

S&S: Ch 3 on denotation and connotation, Ch 4 on imagery

**Week Four, September 20:** Literary Analysis #2 on John Donne's metaphysical conceits

Be prepared to discuss the following readings:

*Seventeenth-Century:* George Herbert's poems from *The Temple* (227 -233,) then "The Agony<sup>2</sup>," "The Passion," "Redemption," "Easter-wings [I]<sup>4</sup>," "Easter Wings [II]," "Jordan [I]<sup>7</sup>," "Church-monuments<sup>8</sup>," "Jordan [II]," "The Collar," "The Pulley."

S&S: Ch 5 & 6 on figurative language

**Week Five, September 27:**

Be prepared to discuss the following readings:

*Seventeenth-Century:* Ben Jonson's epigrams from *The Works of Benjamin Jonson* (p 83 to 89 then p 103 to 107)

S&S: Ch 7 on figurative language

**Week Six, October 4:** Literary Analysis #3 on George Herbert's metaphor; Lady Mary Wroth's sonnets

Be prepared to discuss the following readings:

*Seventeenth-Century:* Lady Mary Wroth's poems and sonnets from *Pamphilia to Amphilanthus* (169 – 176)

S&S: Ch 8 on allusion

**Week Seven, October 11:** Test #2

Be prepared to discuss the following readings:

*Seventeenth-Century:* Robert Herrick's poems (185-196, 205-210, 214-219)

S&S: Ch 9 on meaning and idea

**Week Eight, October 18:** John Milton's sonnets

Be prepared to discuss the following readings:

*Seventeenth-Century:* John Milton's poems "On Time," "On Shakespeare," Sonnets 7, 8, 9, "Lycidas," Sonnets from *Poems*: Sonnets 12, 13, 16, 18, 19.

S&S: Ch 10 on tone

**Week Nine, October 25:** Literary Analysis #4

Be prepared to discuss the following readings:

*Seventeenth-Century:* Anne Bradstreet's poems from *The Tenth Muse Lately Sprung up in America*

S&S: Ch 11 on musical devices and Ch 12 on rhythm and meter

**Week Ten, November 1: NO CLASS MEETING; Submit** Term Paper Literary Analysis

**Week Eleven, November 8:** Test #3; Andrew Marvell's poems

Be prepared to discuss the following readings:

*Seventeenth-Century:* William Empson "Marvell's Garden" and Joseph H. Summers "Marvell's 'Nature'"  
Andrew Marvell's poems (539 -555)

**Week Twelve, November 15:** Margaret Cavendish's poems

Be prepared to discuss the following readings:

*Seventeenth-Century:* Margaret Cavendish's poems (616-622)

**Week of Thanksgiving, November 22: HOLIDAY**

**Week Thirteen, November 29:**

Be prepared to discuss the following readings:

*Seventeenth-Century:* to be announced

**Week Fourteen, December 6:** Review

**Week Fifteen, December 13: Final Exam, 6:00 to 9:00 p.m.**